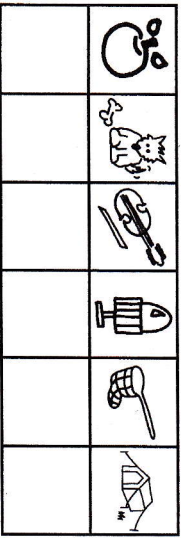


Think and Look Ahead

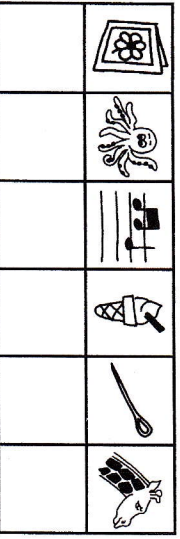
Which Church season starts next week as our preparation for Christmas begins?

Write the first letter of each picture in the boxes to spell out the answer

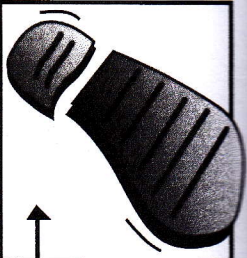
The Season of



Which means



THE FEAST OF CHRIST THE KING (A)



Footprints

MATTHEW 25:31-46

Christ is King!

At the end of time Jesus will gather all the people before him and separate the good from the bad

Use every other letter in the order given to read his words

k l e r p j n l e s f d o b o a r m h
m e k h k d g o b s j h r p c m e g x a

' I w i _ _ l s _ _ a r a t e o _ _ _

_ _ r _ _ m a n _ _ t h e _ _ a s a

s _ _ p _ _ e r d _ _ _ e s _ _ _ e e _ _

f r o _ _ _ o _ _ t s ' _

